



SAFE & VAULT MANUFACTURERS

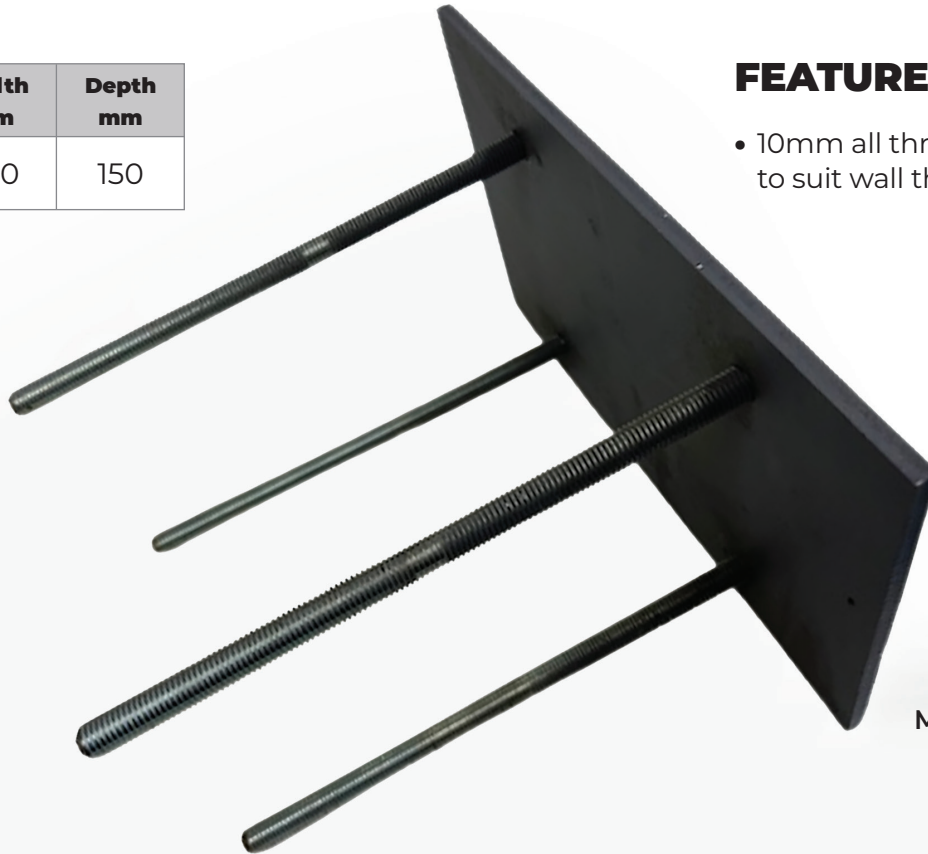


BLISTER WALL MOUNT PLATE

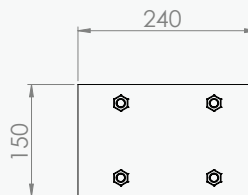
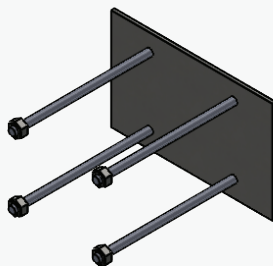
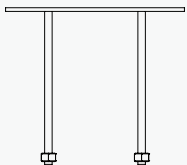
Model	Width mm	Depth mm
GKC1-P	240	150

FEATURES

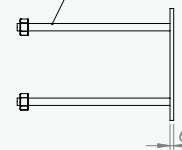
- 10mm all thread and nut to suit wall thickness.



MODEL GKC1-P



10mm all thread & nut to suit wall thickness



THIS CMI SAFE ACCESSORY COMES WITH A FIVE YEAR WARRANTY, EXCLUDING FREIGHT AND TRAVELLING.



CMI Safe Co
ABN | 35 664 874 766

☎ 02 9547 1488
✉ sales@cmisafe.com.au

📍 244 West St | Carlton | NSW | 2218
🌐 www.cmisafe.com.au



MADE IN AUSTRALIA

CD DZ 00354 210425