



# KEY CUSTODY SAFE WITH KABA X10 DIGITAL LOCK



**NIL FIRE  
RESISTANCE**

MODEL	HEIGHT		WIDTH		DEPTH		WEIGHT	PRICE INCL. GST
	EXTERNAL	INTERNAL	EXTERNAL	INTERNAL	EXTERNAL	INTERNAL		
<b>GKC1</b>	<b>160 mm</b>	<b>130 mm</b>	<b>250 mm</b>	<b>230 mm</b>	<b>150 mm</b>	<b>82 mm</b>	<b>15kg</b>	<b>\$</b>

**IMPORTANT** Please allow 50mm projection for the lock hardware.  
**ALL CMI SAFES COME WITH A FIVE YEAR WARRANTY, EXCLUDING FREIGHT AND TRAVELLING, WITH A 24 MONTH WARRANTY ON LOCKS.**

**CMI SAFE CO.** ABN 35 664 874 766  
 Head Office: 244 West Street, Carlton NSW 2218  
 Phone: (02) 9547 1488 Fax: (02) 9547 2104  
 Website: [www.cmisafe.com.au](http://www.cmisafe.com.au)  
 Email: [sales@cmisafe.com.au](mailto:sales@cmisafe.com.au)

AVAILABLE FROM



**MADE IN AUSTRALIA**



# KEY CUSTODY SAFE WITH KABA X10 DIGITAL LOCK

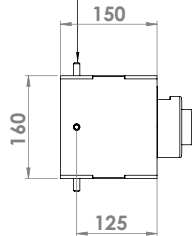
## KEY CUSTODY SAFE OPTIONS

### Blister safe for sleeve application 10mm diameter mounting bolts

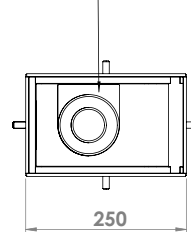
**Note:**

- NO bolt holes in back of safe
- 10mm threaded holes in all four sides located in centre @ 125mm from front of safe

M10 threaded bolt



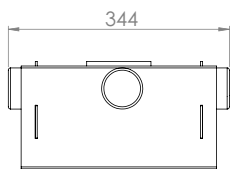
location of ID plate



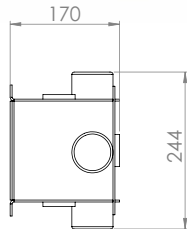
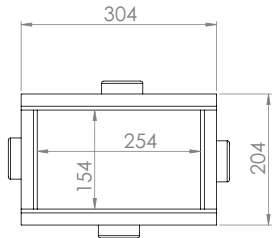
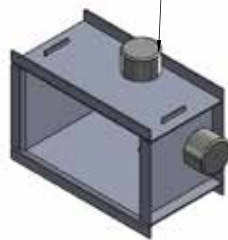
all corner external and internal welds



### Blister sleeve



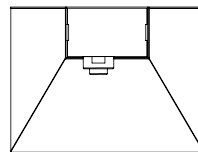
cup linings top protect bolts



### Blister stand

**Note :**

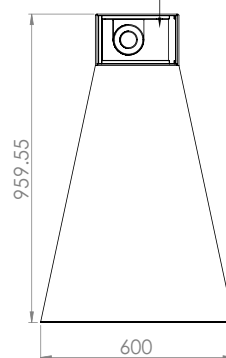
- Stand 800mm h secured by 4x 12mm bolts to floor
- Blister secured by 4x 10mm stud and nuts back of safe and 2 x12mm bolts in base



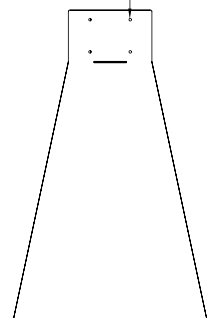
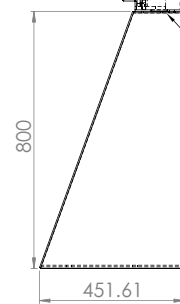
2x 12mm bolts

4 x 10mm bolt studs

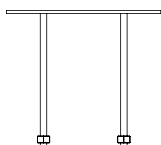
blister safe



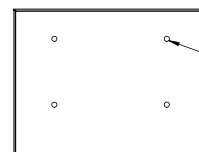
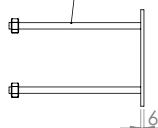
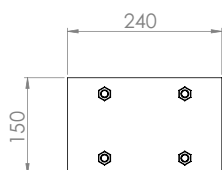
X10 lock



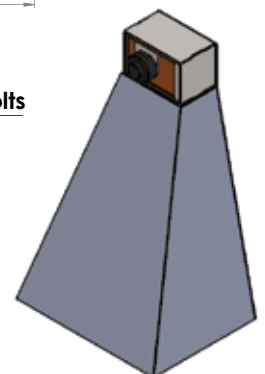
### Blister wall mount plate



10mm all thread & nut to suit wall thickness



4x 12mm bolts



**MADE IN AUSTRALIA**